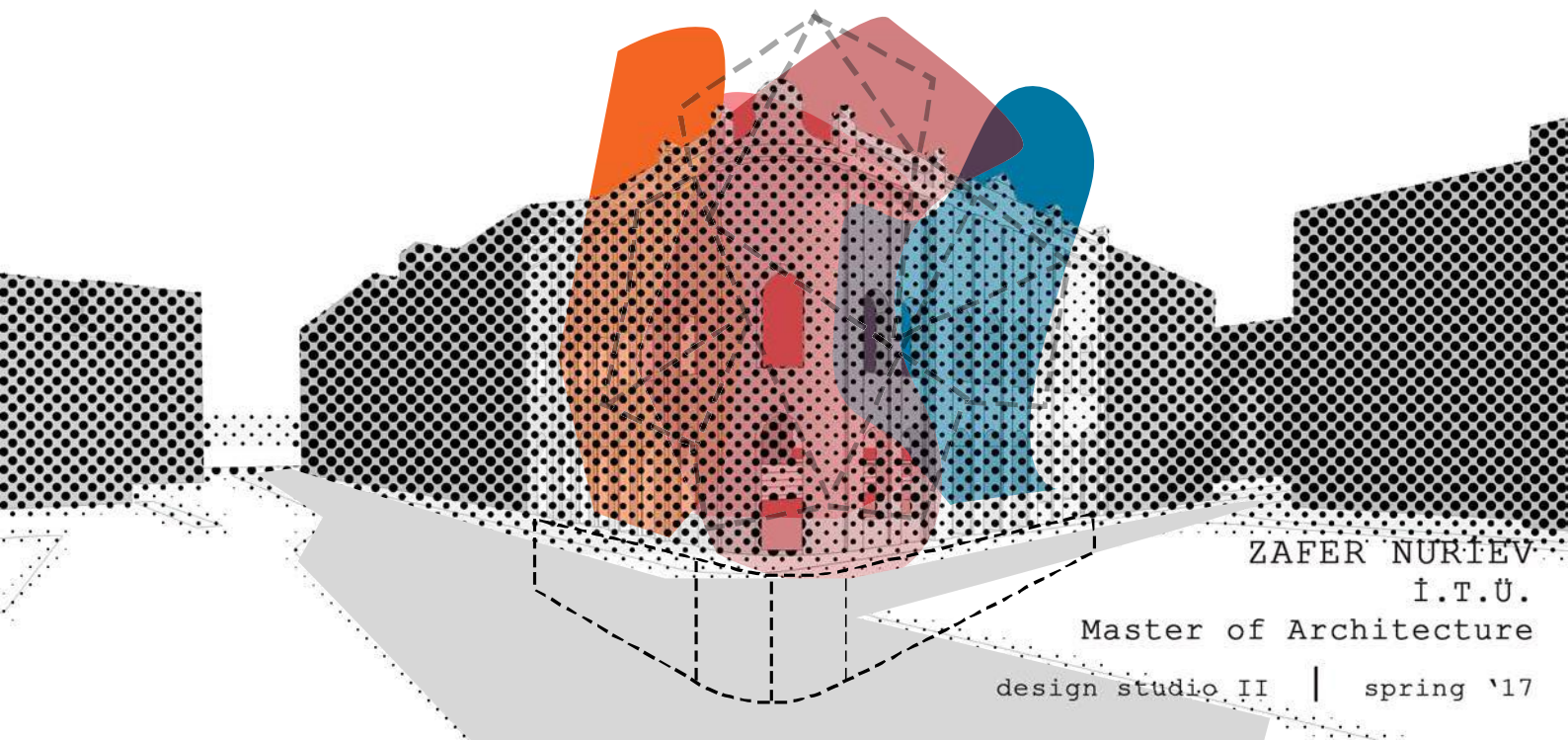


NATIONAL ART GALLERY of
bosnia and herzegovina



ZAFER NURIEV

I.T.Ü.

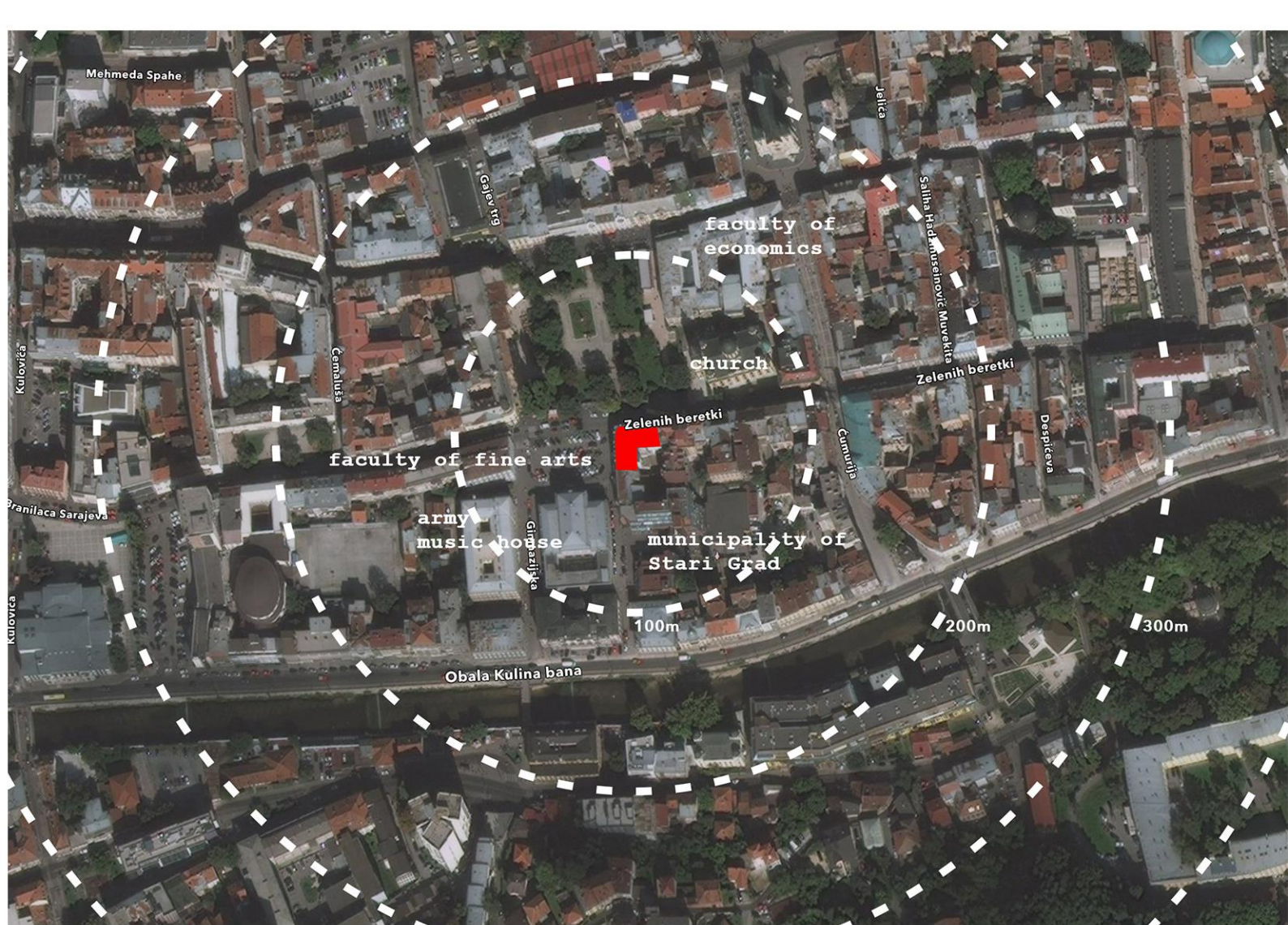
Master of Architecture

design studio II | spring '17

Professor: Assist. Prof. Dr. Adnan Pasic
Research Assistant: Dr. Nizam Onur Sönmez

Jury member: Prof. Dr. Birgül Çolakoğlu
Jury member: Prof. Dr. Murat Gül
Jury member: Prof. Dr. Sinan Mert Şener
Guest Jury member: Han Tümertekin

Istanbul, 2017 June 8



nearby locations



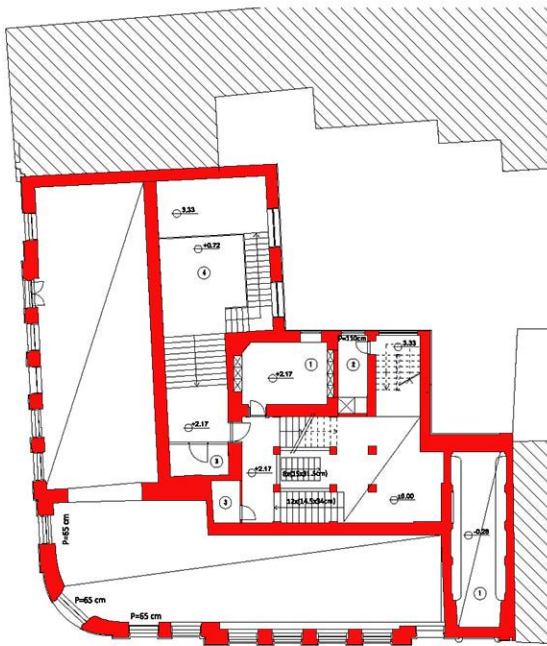
Site area - 826 m²



existing building

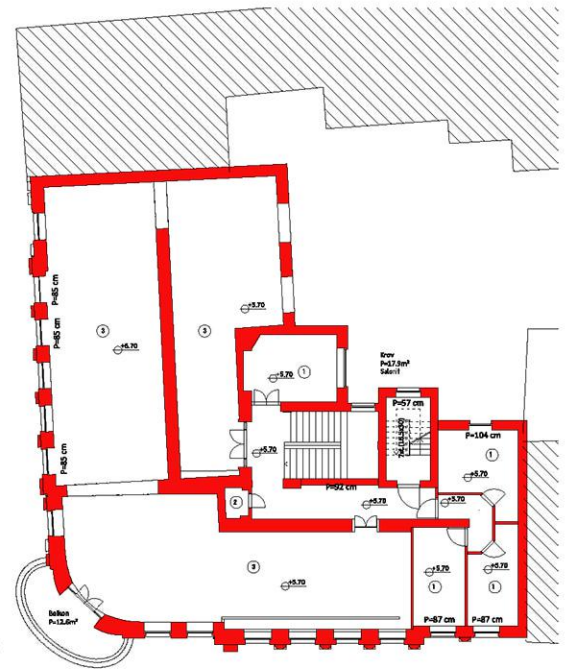
MEZZANINE FLOOR

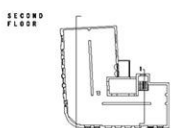
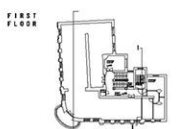
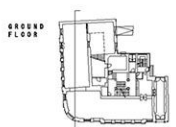
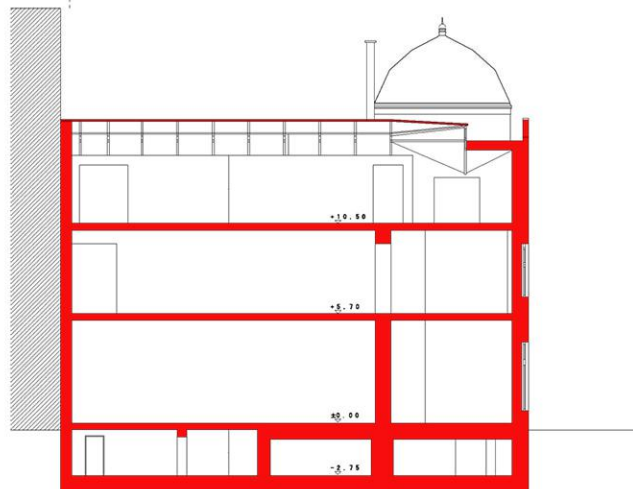
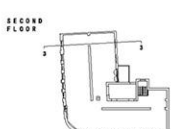
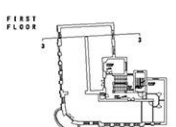
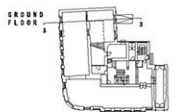
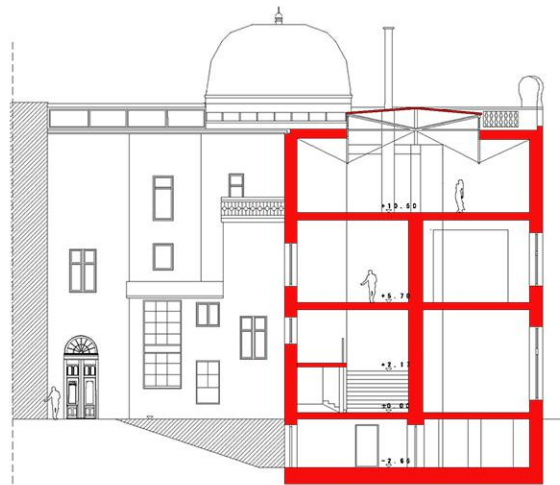
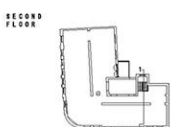
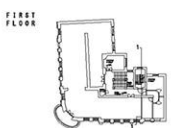
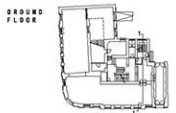
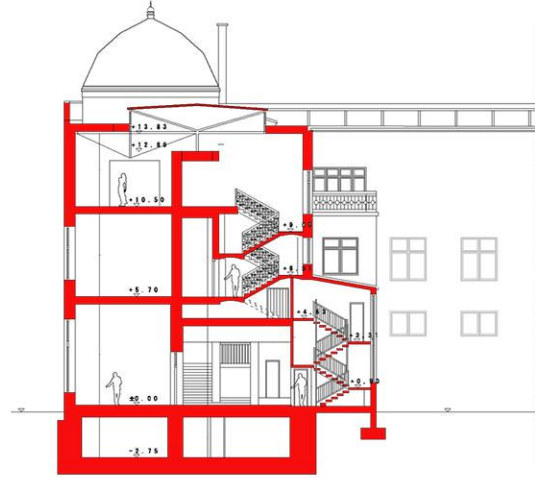
- 1 OFFICE
- 2 SUPPORT STUFF ROOM
- 3 STORAGE
- 4 LIBRARY



FIRST FLOOR

- 1 OFFICE
- 2 STORAGE
- 3 GALLERY SPACE





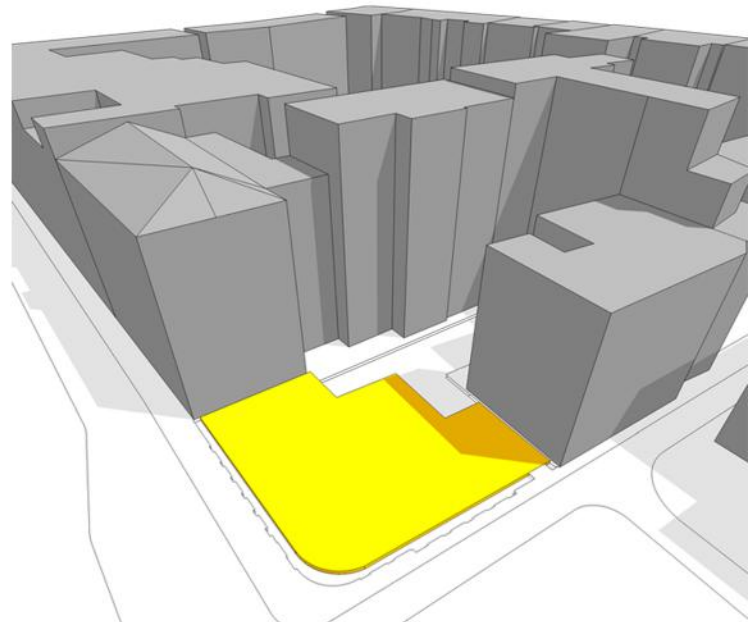
existing building



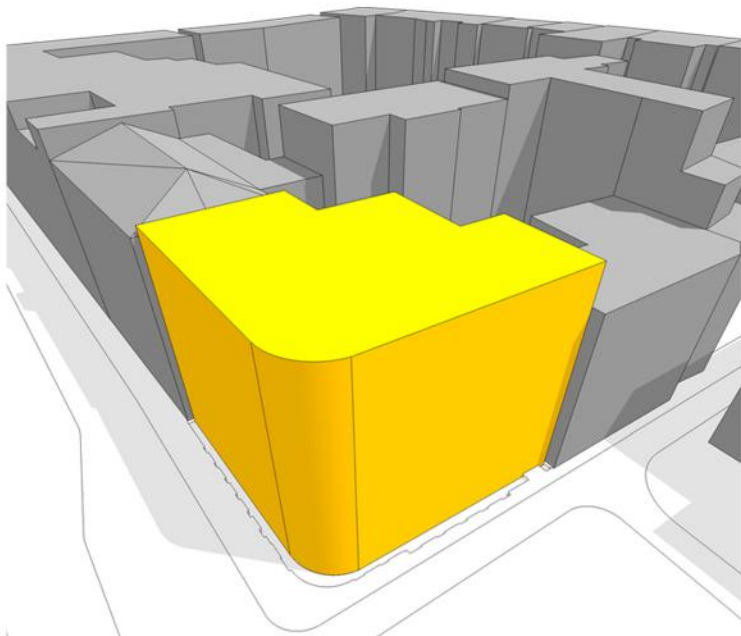
views from the street



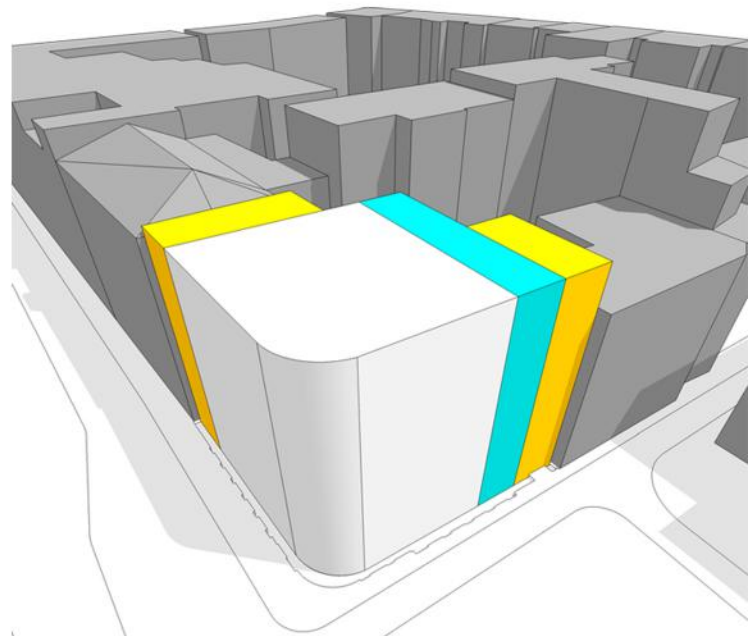
re-use of the existing facade



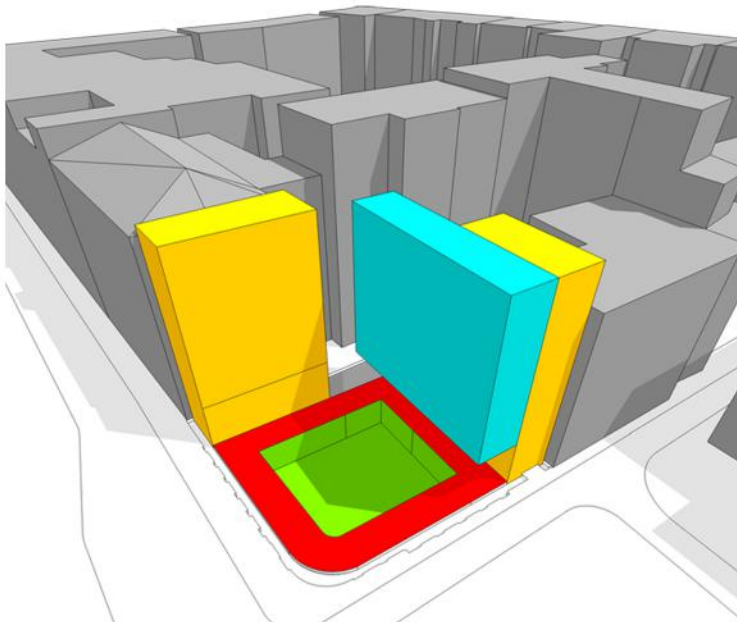
foot-print



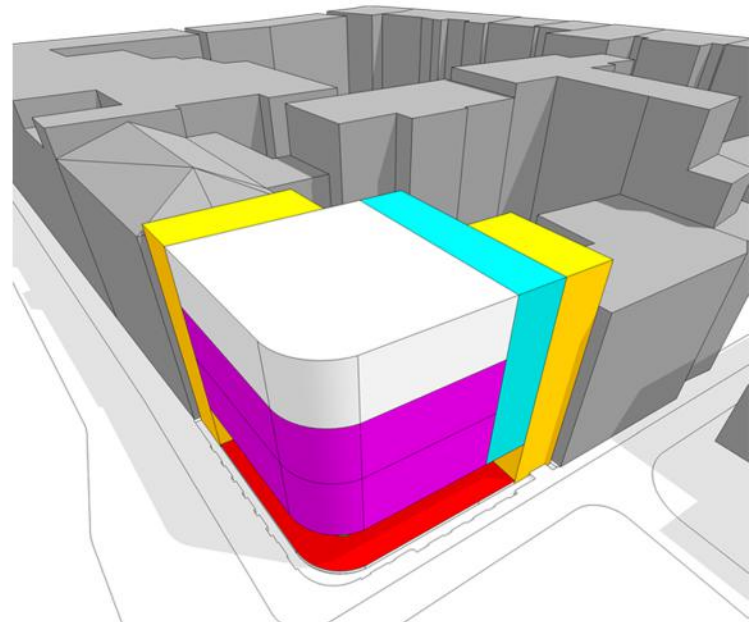
volume



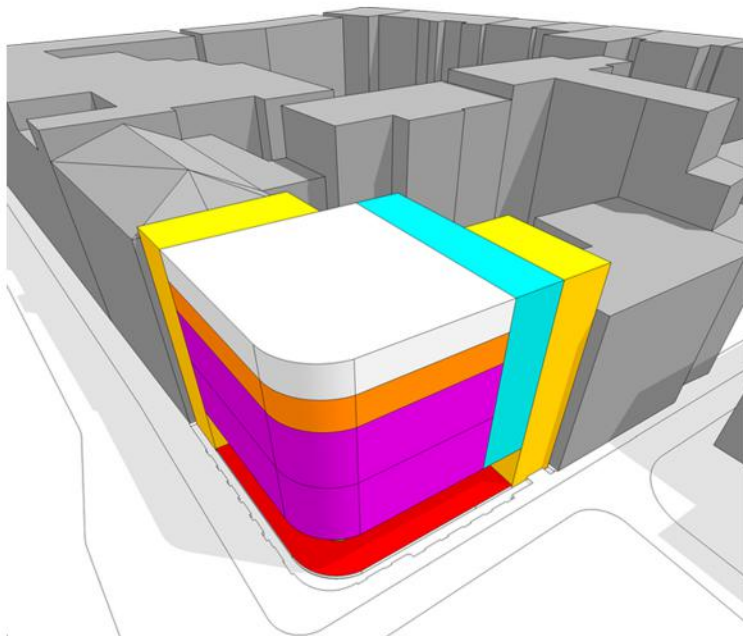
service and circulation zones



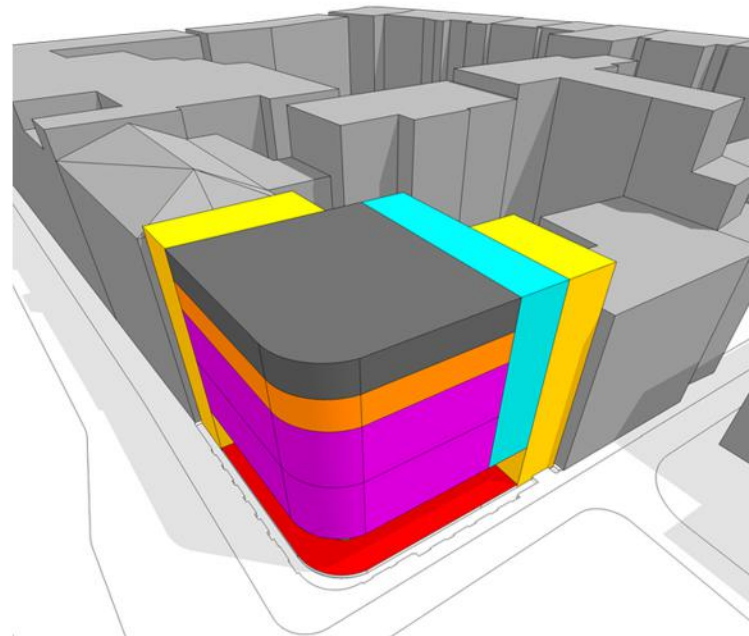
street foyer and
contemporary exhibition space



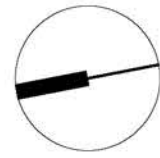
permenant collection zones



administration and
office zone



artists club house
| restaurant



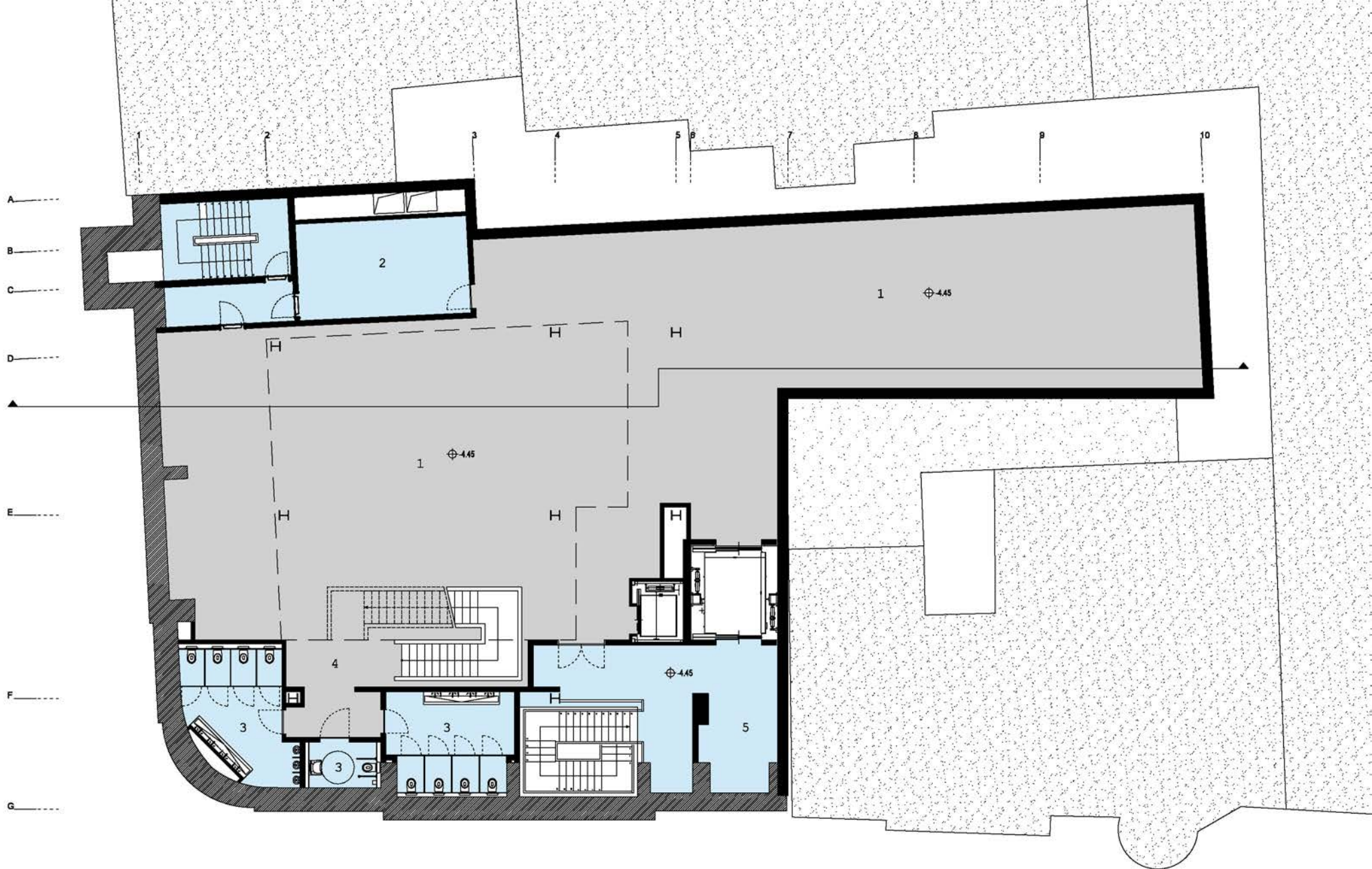
+23.74m
+19.29m
+15.01m
+0.00m

SITE PLAN
0 5 10 15m
[meter]



- 1 conservation room
- 2 photo lab
- 3 art depot
- 4 workshop
- 5 locker room
- 6 storage
- 7 mechanical room
- 8 IT server room
- 9 electrical room
- 10 elevator machinery room
- 11 circulation

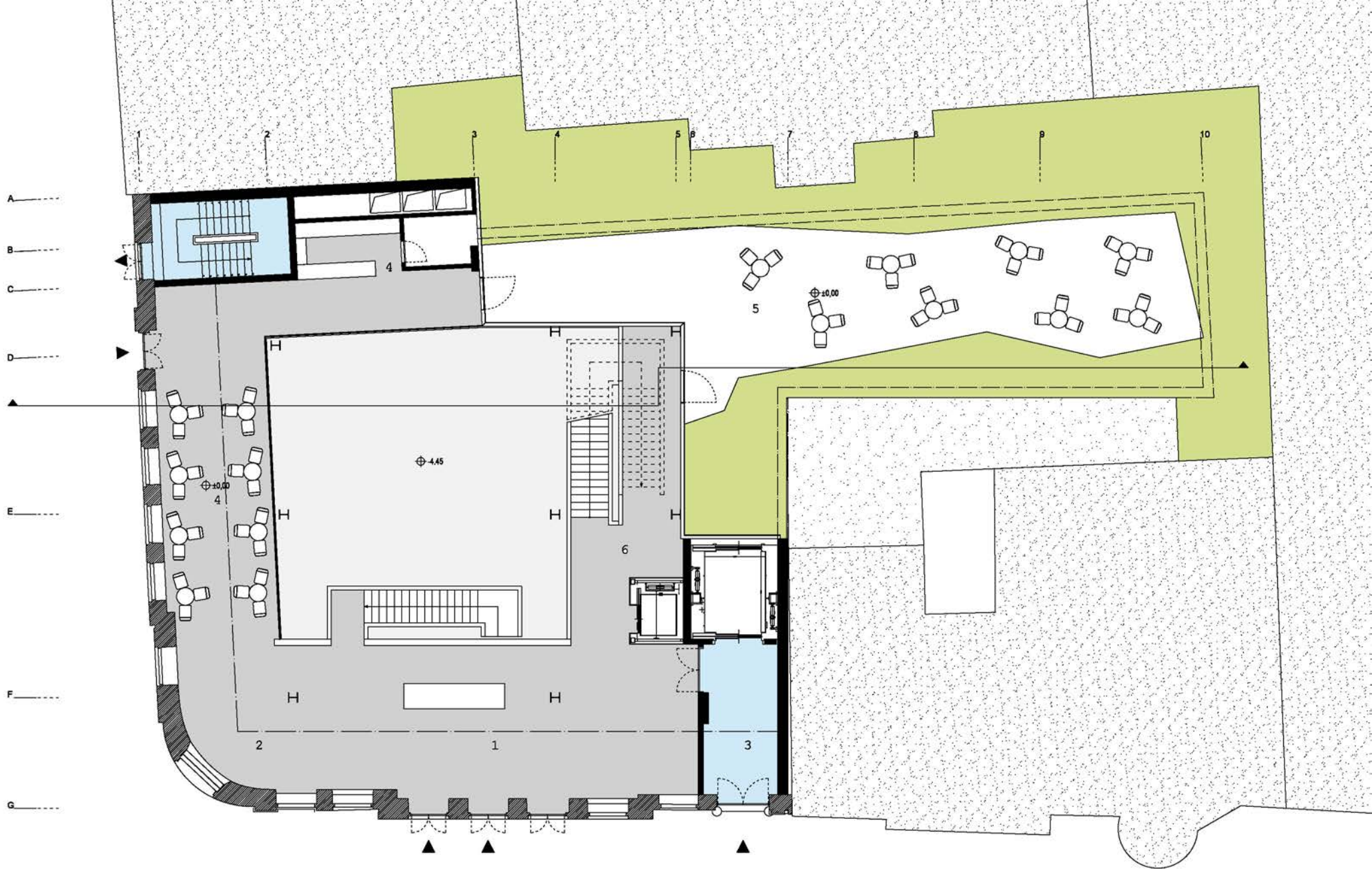
-2 BASEMENT FLOOR
 0 2 5m
 [meter]



- 1 exhibition area
- 2 storage
- 3 WC
- 4 circulation
- 5 support storage

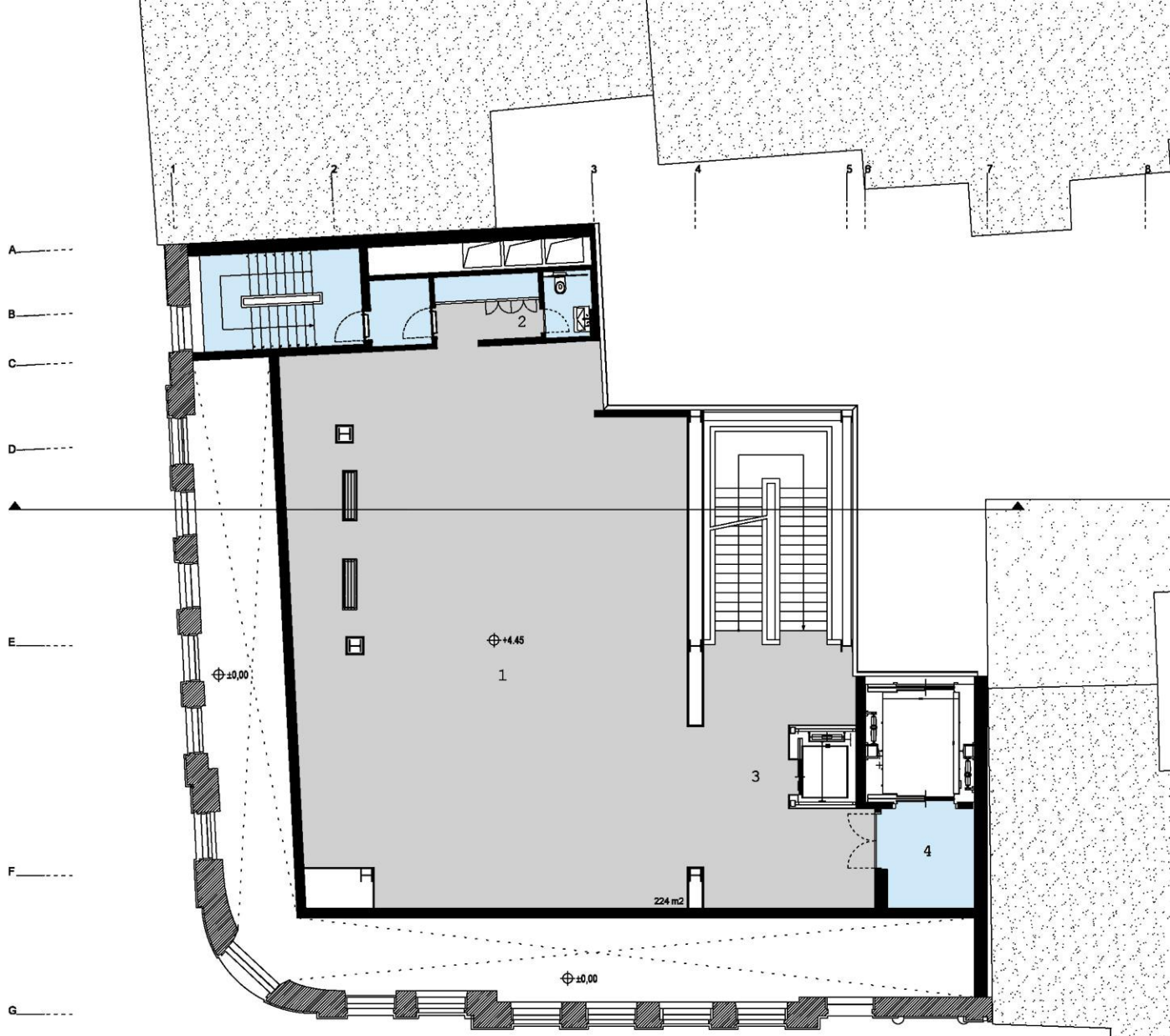
-1 BASEMENT FLOOR





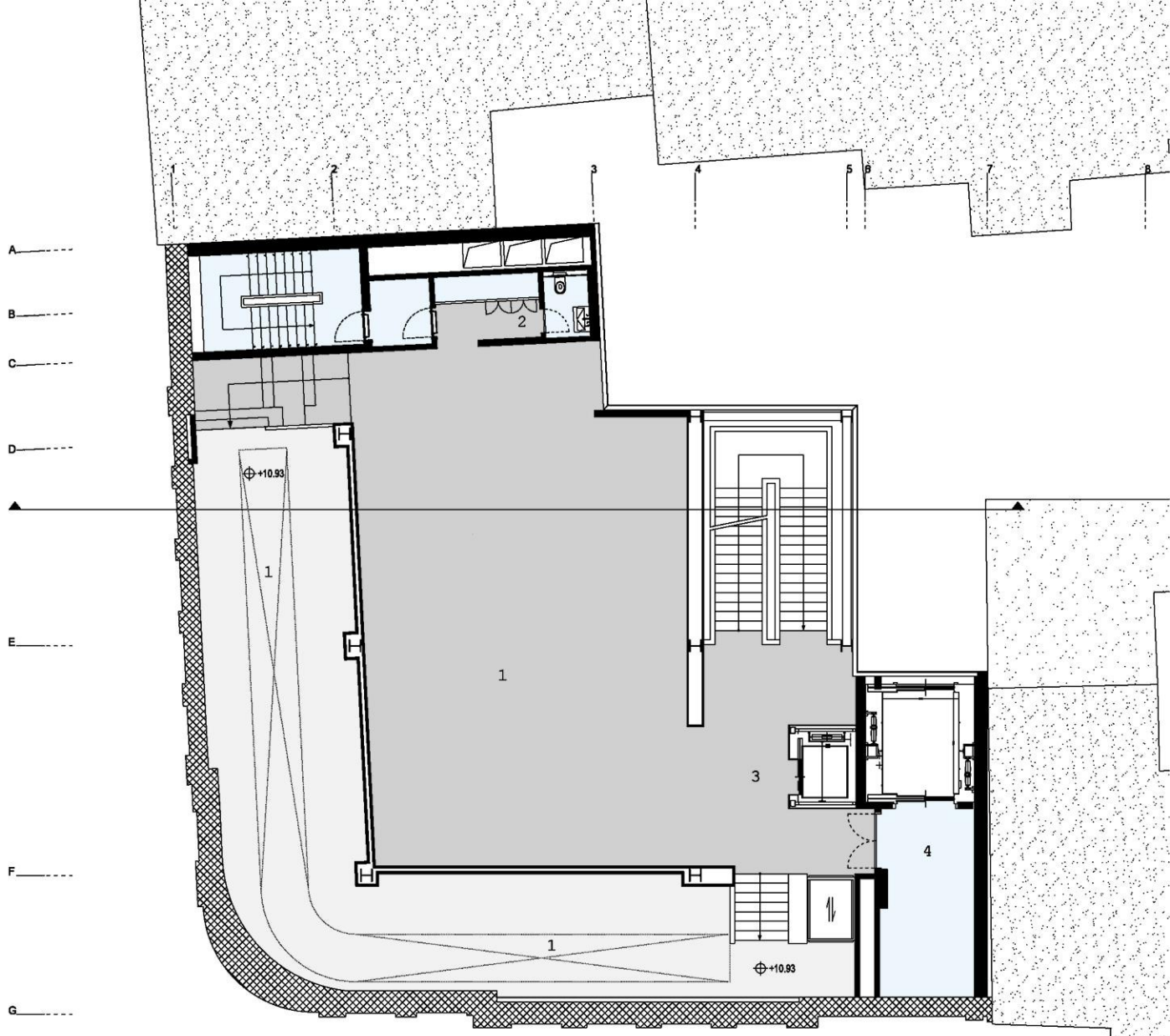
- 1 foyer
- 2 gift shop
- 3 staff / service entrance
- 4 cafe/bistro
- 5 courtyard
- 6 circulation

GROUND FLOOR
 0 2 5m
 [meter]



- 1 exhibition area
- 2 support facilities
- 3 circulation
- 4 storage

1st FLOOR
 0 2 5m
 [meter]



- 1 exhibition area
- 2 support facilities
- 3 circulation
- 4 storage

2nd FLOOR

0 2 5m
|-----|-----|-----|
[meter]

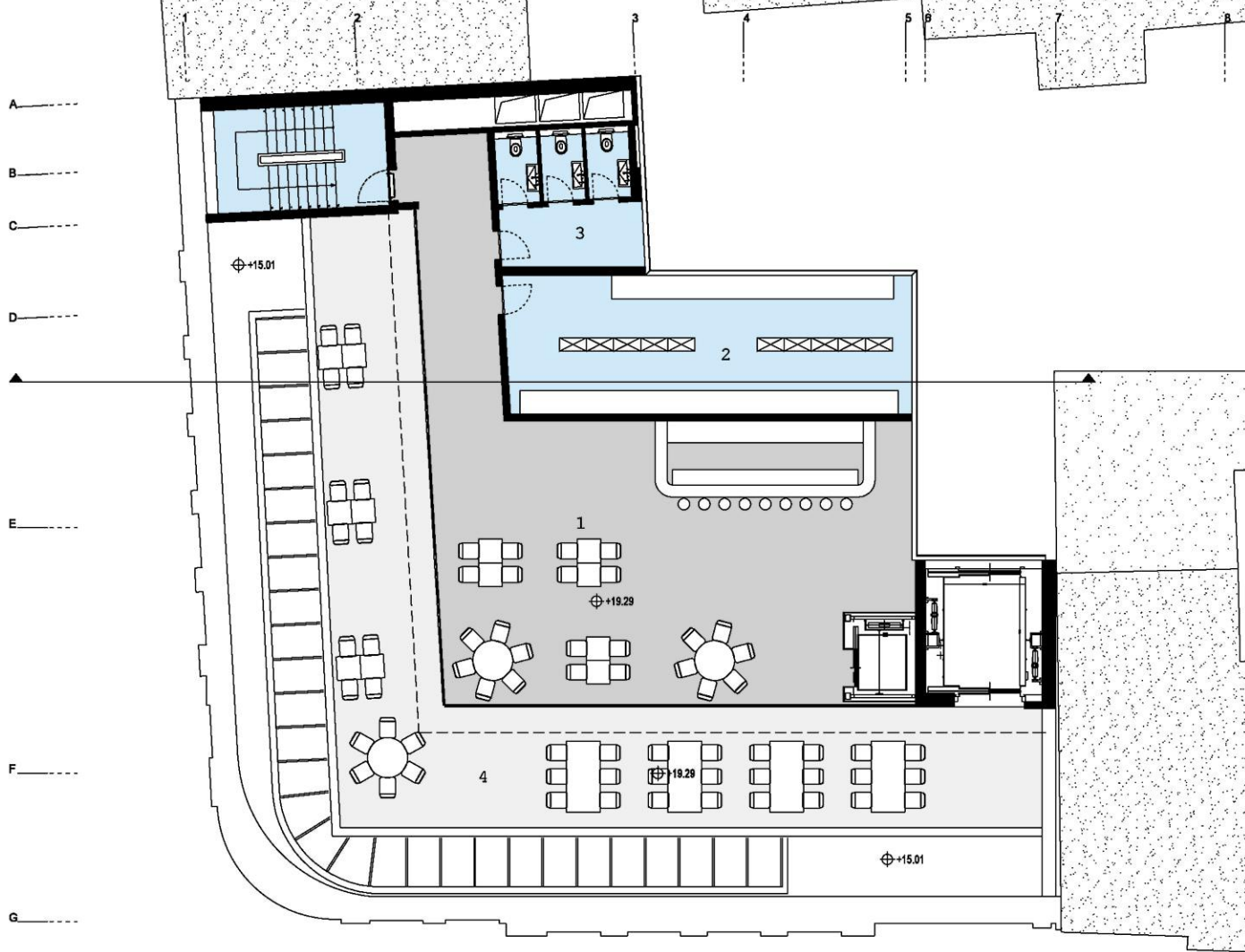
A-----
 B-----
 C-----
 D-----
 ▲-----
 E-----
 F-----
 G-----



- 1 director room
- 2 curators room
- 3 open office
- 4 meeting room
- 5 library
- 6 kitchenette
- 7 WC's
- 8 lounge
- 9 circulation
- 10 storage

3rd FLOOR

0 2 5m
 [meter]



- 1 restaurant
- 2 kitchen
- 3 WC's
- 4 terrace

ATTIC FLOOR



list of rooms:

2nd basement floor

- 107.2 m2 conservation room
- 20.0 m2 photo lab
- 140.8 m2 art depot
- 42.6 m2 workshop
- 27.0 m2 locker room
- 38.8 m2 storage
- 28.0 m2 mechanical room
- 11.4 m2 IT server room
- 24.9 m2 electrical room
- 9.9 m2 elevator machinery room
- 117.6 m2 circulation
568.2 m2 net total

1st basement floor

- 433.2 m2 exhibition area
- 26.0 m2 storage
- 46.9 m2 WC's
- 41.0 m2 circulation
- 38.4 m2 support stuff storage
585.5 m2 net total

ground floor

- 72.5 m2 entrance/foyer
- 45.4 m2 gift shop
- 16.8 m2 Staff / service entrance
- 72.2 m2 cafe/bistro
- 140.0 m2 courtyard (hard flooring)
- 50.9 m2 circulation
257.8 m2 net total (indoor areas)

1st floor

- 214.9 m2 exhibition area
- 11.4 m2 support area
- 37.6 m2 circulation
- 8.6 m2 storage
272.5 m2 net total

2nd floor

- 298.2 m2 exhibition area
- 11.4 m2 support area
- 48.7 m2 circulation
- 17.8 m2 storage
376.1 m2 net total

3rd floor

- 23.1 m2 director room
- 14.8 m2 curators room
- 39.4 m2 open office
- 12.3 m2 meeting room
- 65.8 m2 library
- 9.8 m2 kichenette
- 8.3 m2 WC's
- 18.7 m2 lounge
- 53.2 m2 circulation
- 8.8 m2 storage
254.6 m2 net total

4th floor

- 137.8 m2 artist social club
- 50.0 m2 kitchen
- 17.4 m2 WC's
- 113.8 m2 terrace
319.0 m2 net total

NET TOTAL

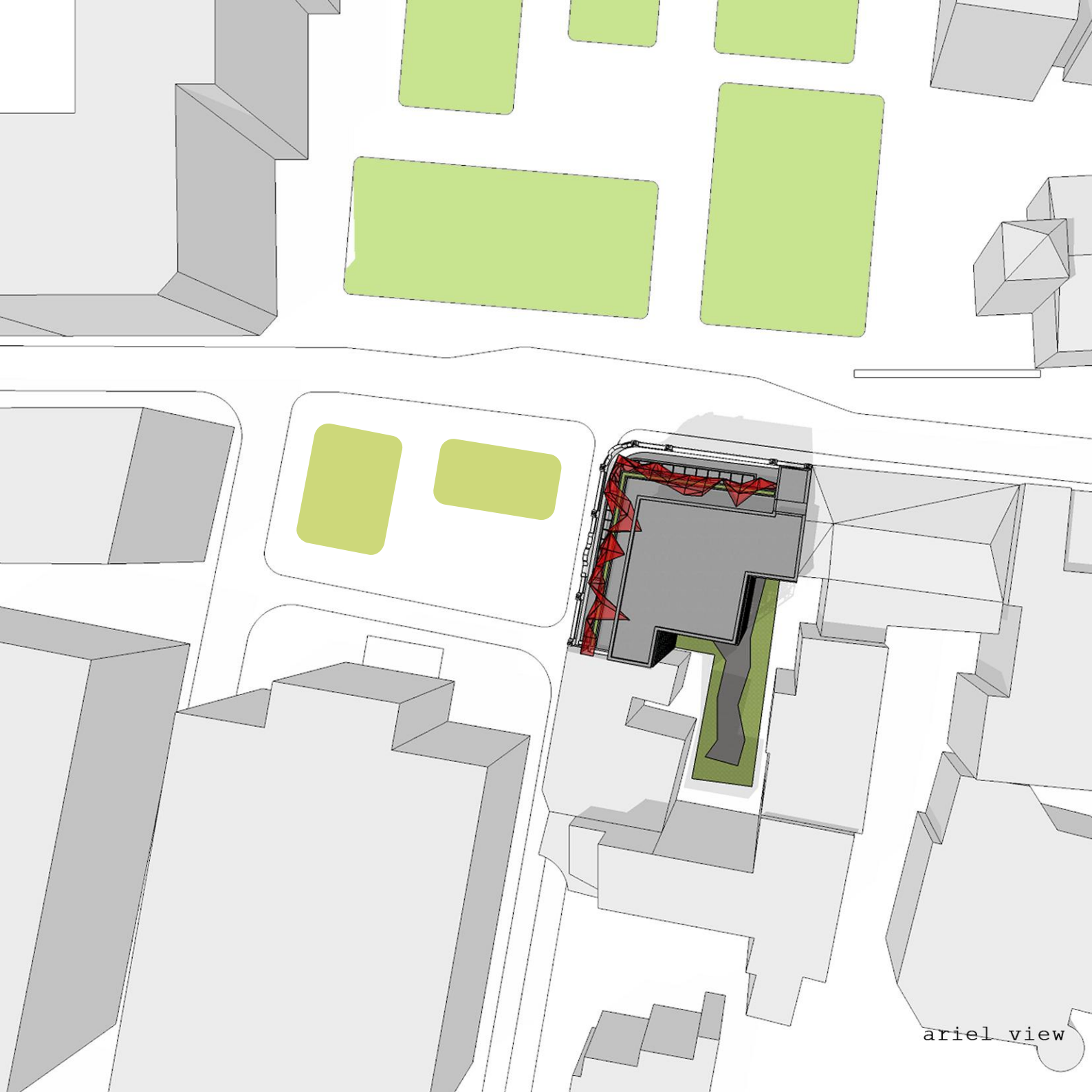
2633.7 m2

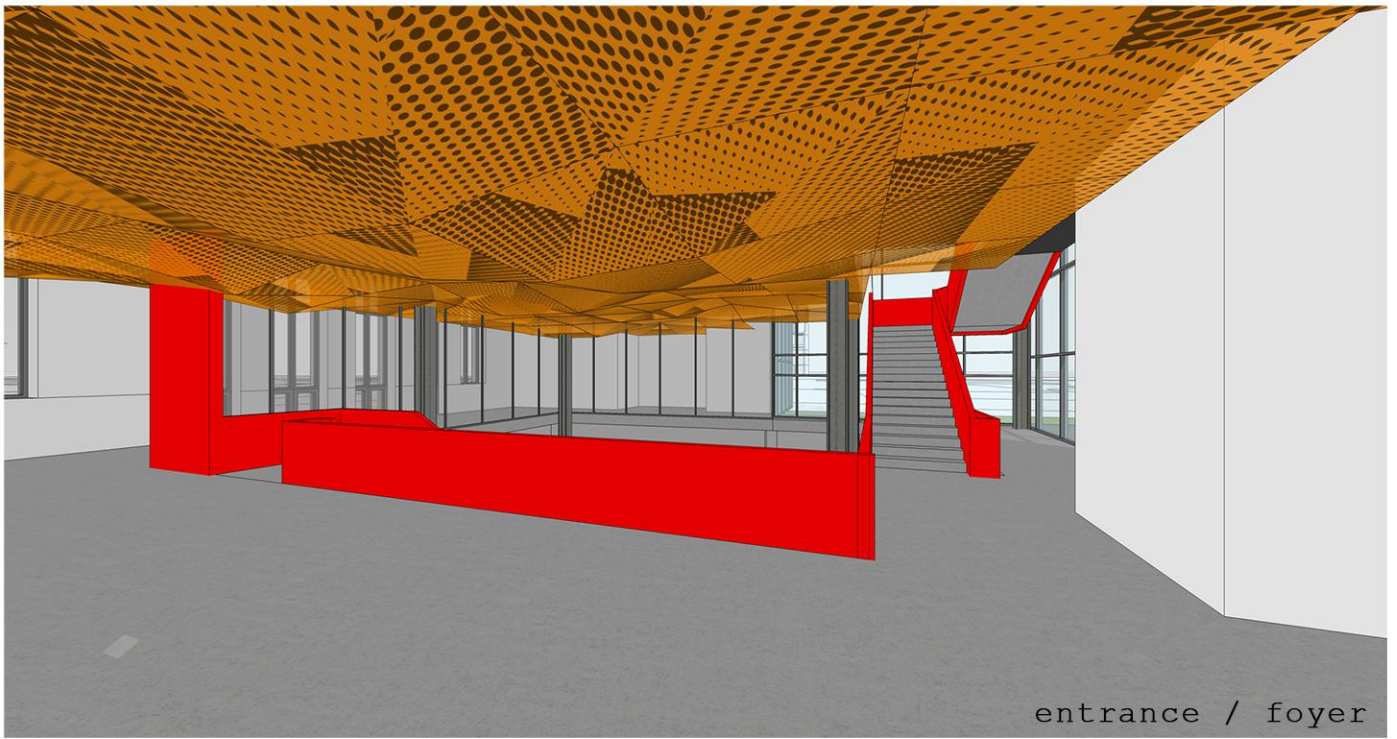




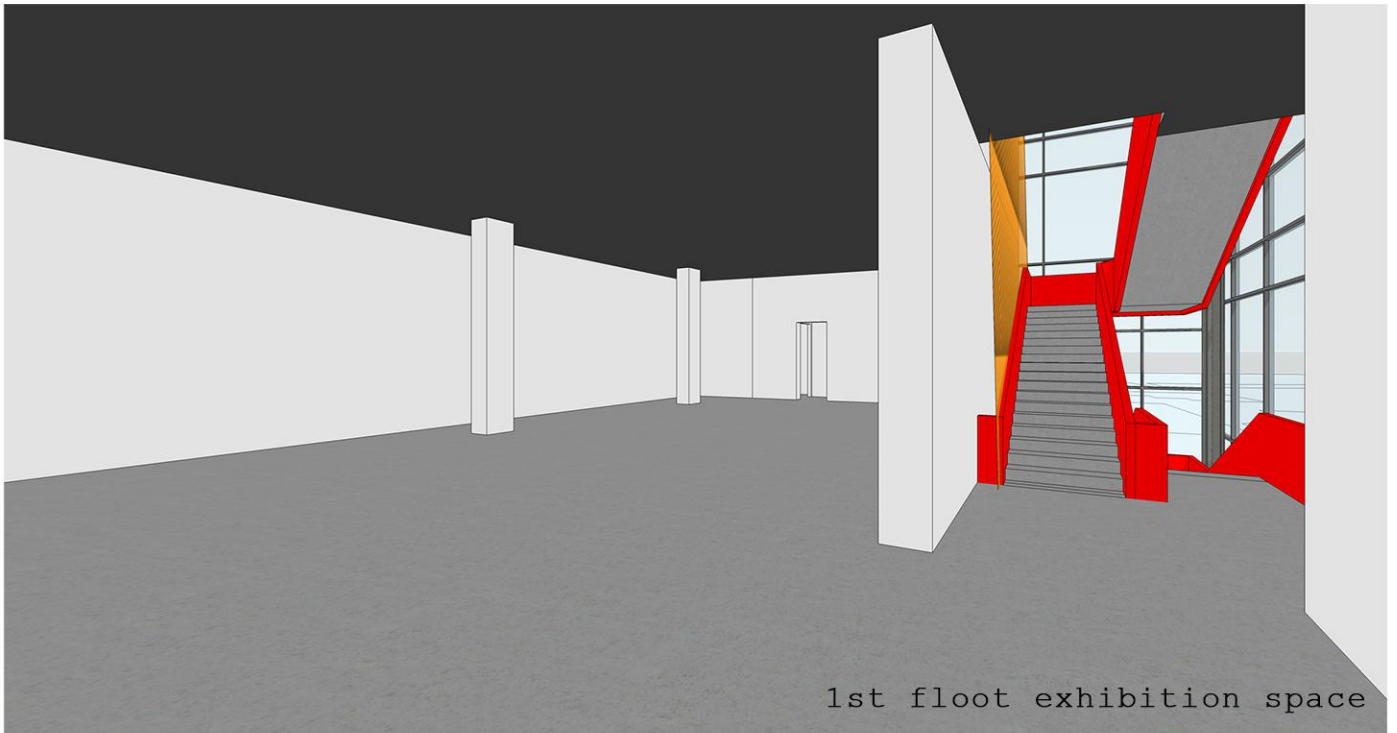


saouth facade
[courtyard]

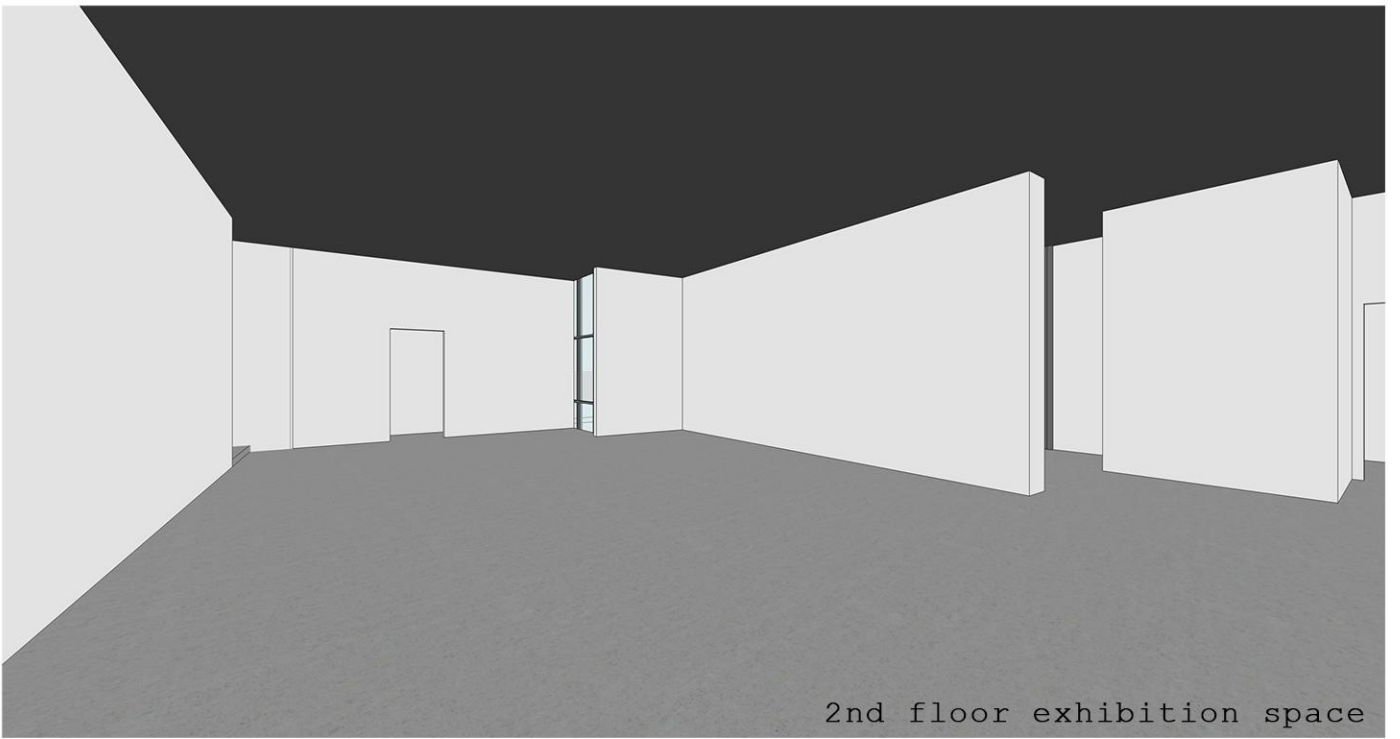




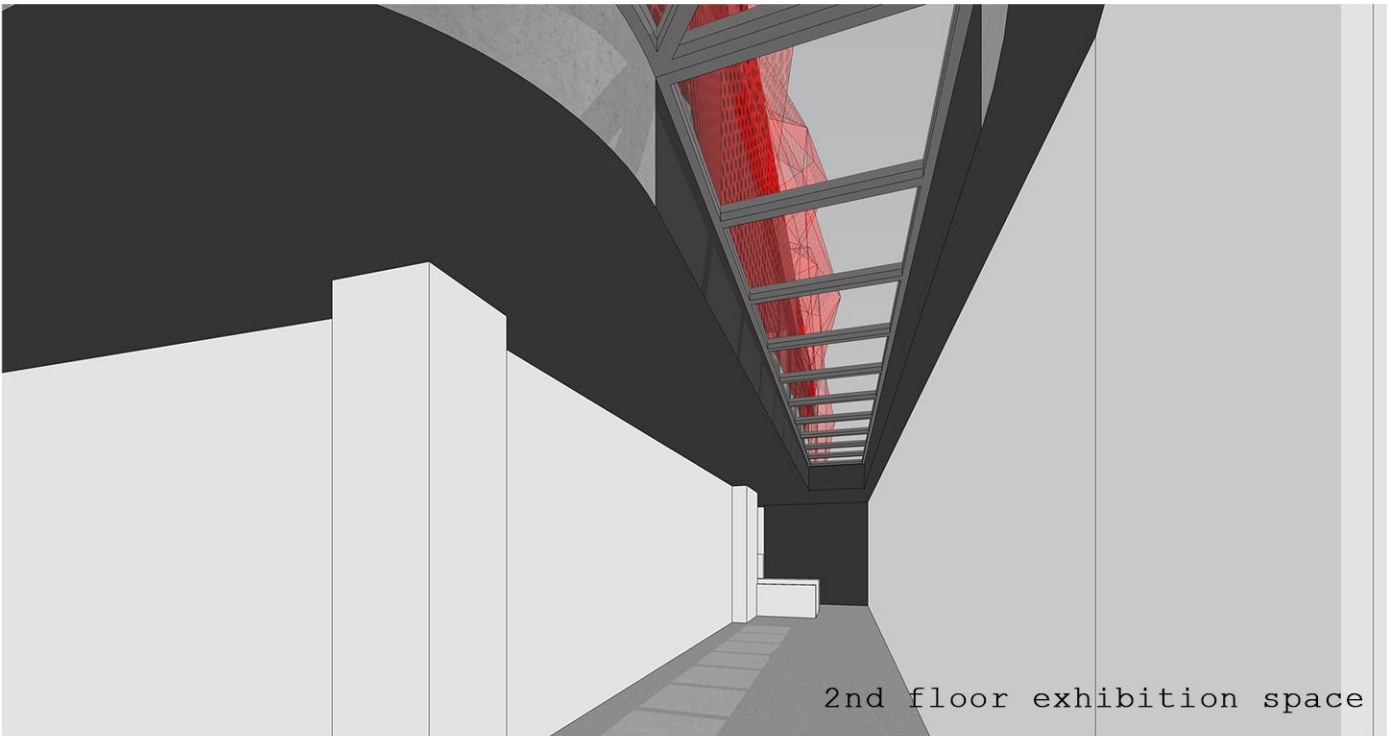
entrance / foyer



1st fload exhibition space



2nd floor exhibition space



2nd floor exhibition space